

DRY-MATE® DRY-DISCONNECTS

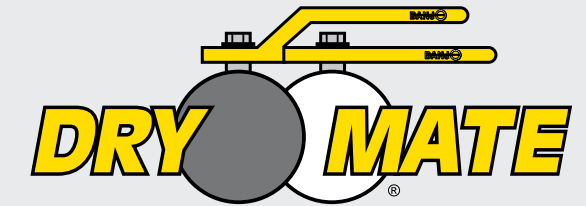
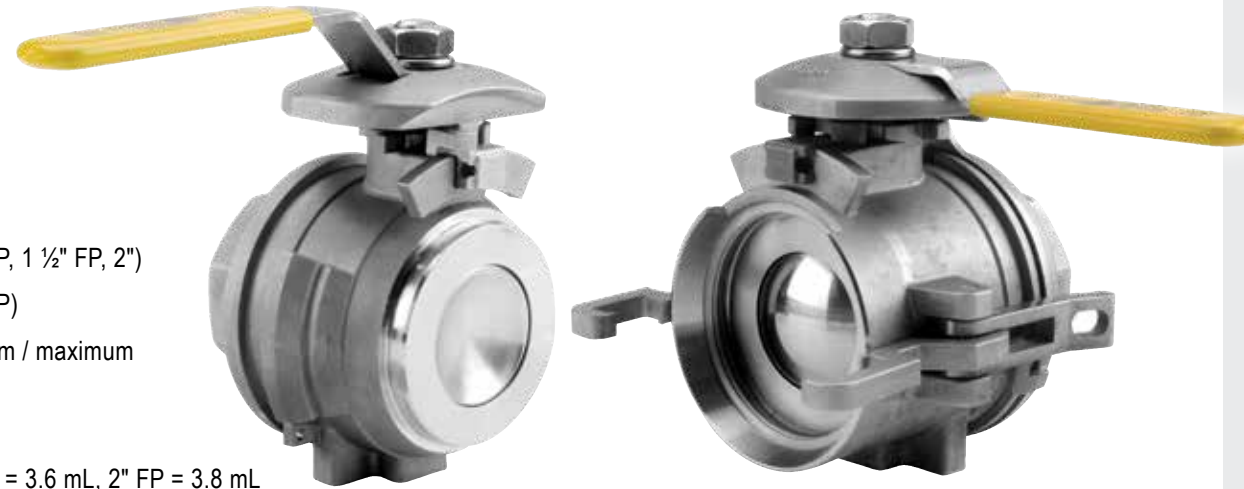


DRY-MATE® SEALS TIGHT, MINIMIZING FLUID LOSS WHEN DISCONNECTING AND KEEPING COSTLY, POTENTIALLY HARMFUL PRODUCT WHERE IT BELONGS

316 STAINLESS STEEL DRY-MATE

STAINLESS STEEL FEATURES

- 316 heavy duty stainless steel construction
- Size options: 1" FP, 1½" FP, 2" & 2" FP
- FKM, EPDM or Kalrez® face seals
- PTFE ball seats
- 150 PSI maximum operating pressure (1" FP, 1 ½" FP, 2")
- 300 PSI maximum operating pressure (2" FP)
- -20°F @ 70 PSI & 300°F @ 70 PSI minimum / maximum operating temperatures
- Available in manifold flange connections
- Spillage: 1" FP = 1.7 mL, 1½" FP = 3 mL, 2" = 3.6 mL, 2" FP = 3.8 mL



SAFETY FIRST

Product is important, but the safety of your workers is essential. With Dry-Mate Dry-Disconnects, leakage from disconnecting is miniscule compared to standard valves. When properly installed and operated, the danger posed by harmful chemicals contacting your workers is greatly reduced.

EVERY DROP COUNTS

Your product is money. Why waste money in spilling your product every time you disconnect? With Dry-Mate, your spillage amount will be significantly reduced. At 3 mL product spillage for a 2" line, you can have peace of mind that your product is being placed where it should be and not on the ground.

PRODUCT ONLY WHERE YOU WANT IT

When a Dry-Mate is properly installed and operated, the assembly will not accidentally separate while fluid is flowing; preventing costly mishaps.

DITCH THE MAINTENANCE

All that spillage has to go somewhere. If you are collecting large areas of spillage run-off, you have to have it pumped out. Reduce your maintenance costs on your spillage pits by keeping fluids contained.

Kalrez® is a registered trademark of E.I. du Pont de Nemours and company.

FP= Full Port

POLYPROPYLENE DRY-MATE

POLYPROPYLENE FEATURES

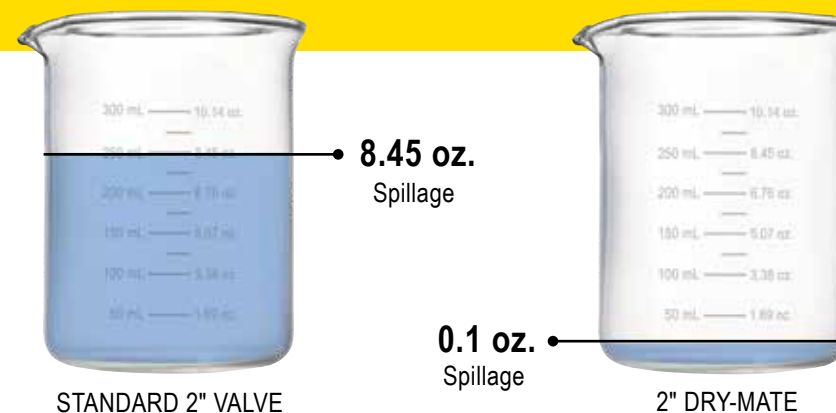
- Lightweight
- Size options: 1½" FP, 2", 2" FP & 3" FP
- Wide range of chemical resistances
- FKM, EPDM or Kalrez® face seals
- 100 PSI maximum operating pressure (1 ½" FP, 2")
- 225 PSI maximum operating pressure (2" FP)
- 150 PSI maximum operating pressure (3" FP)
- -20°F @ 70 PSI & 150°F @ 70 PSI minimum / maximum operating temperatures
- Available in manifold flange connections
- Spillage: 1½" FP = 2 mL, 2" = 2.6 mL, 2" FP = 3.6 mL, 3" FP = 20 mL



NOT YOUR TYPICAL SPILLAGE

99% SPILLAGE REDUCTION




- Reduction of typical spillage using standard 2" valve with cam lock connection vs. Dry-Mate
- 8.45 oz. (250 mL) vs. 0.1 oz. (3 mL) spillage
- At five disconnections per day, this is **over 118 gallons (450 liters) saved per year**; enough to fill the gas tanks of eight mid-size automobiles



C O N N E C T W I T H C O N F I D E N C E™

DRY-MATE® OFFERS A VARIETY OF CHEMICAL RESISTANCE, SIZING, AND DURABILITY OPTIONS THAT SUPPORT YOUR BUDGET

DRY-MATE MODEL CHART

		DRY-MATE MODELS					
		1" FULL PORT	1½" FULL PORT	2" STANDARD PORT	2" FULL PORT	3" FULL PORT	
DRY-MATE OPTIONS	POLYPROPYLENE		X	✓	✓	✓	✓
	STAINLESS STEEL		✓	✓	✓	✓	X

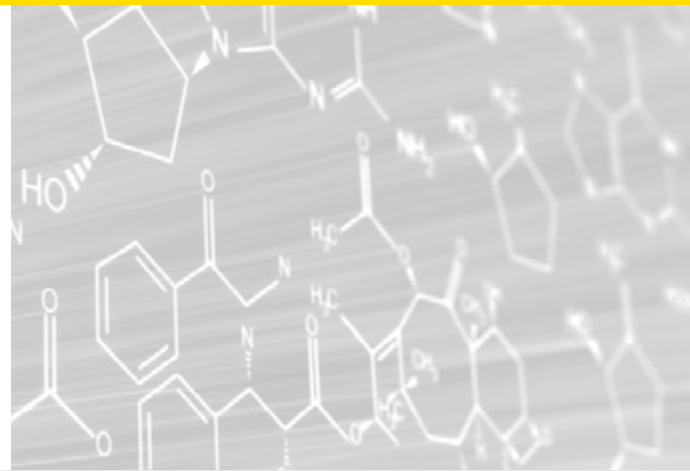
CHEMICAL RESISTANCE CHART



SELECT PROPER VALVE MATERIAL

To view a full listing of our Chemical Resistance Chart, scan this QR code or visit:

BanjoCorp.com/ChemicalResistanceChart



BANJO CORPORATION
 A Unit of IDEX Corporation
 150 Banjo Drive
 Crawfordsville, IN 47933 U.S.A.
 Telephone: (765) 362-7367
 Fax: (765) 362-0744
banjocorp.com

To learn more about our Dry-Disconnect product line, scan this QR code or visit:



BanjoCorp.com/DryDisconnects

